

# Lynch Creek Farm NEWS

BEN FRANKLIN SOCIETY HEADQUARTERS  
MEETING • DINING • EVENT VENUE

ON THE WEB: "WWW.LYNCHCREEK.COM" AND "WWW.BENFRANKLINSOCIETYNC.ORG"  
ON FACEBOOK AS: "LYNCH CREEK FARM" AND "BEN FRANKLIN SOCIETY"

## CALENDAR OF EVENTS MAY 2019

### LYNCH CREEK FARM

1973 ROCKY FORD ROAD  
KITTRELL, NC 27544  
CALL/TEXT 252-767-1167

### ① Grist Mill Inventory Field Trip

MAY 8<sup>TH</sup> at 9:00am (SEE PAGE-4)



### ② BAKERY PICK-UP DAY MAY 16<sup>TH</sup>

③ ( LAST ORDER DAY MAY 13<sup>TH</sup> - SEE PAGE-3 )

#### FIVE CONVENIENT PICK-UP SITES

HEARTY RUSTIC SEEDED BOULE

CIABATTA ROLLS

BREADWORKS CINNAMON BREAD

FOCACCIA WITH HERBS AND CARAMELIZED ONIONS

**ORDER ONLINE NOW at [www.lynchcreek.com/store](http://www.lynchcreek.com/store)**

### ④ CABIN BOOK & MEDIA CLUB - "My Dear Hamilton" by Staphanie Dray

MAY 21<sup>ST</sup> @ 3:30pm (SEE PAGE-2)

### ⑤ TOMATO PIE BUFFET with MUSIC

Saturday MAY 25<sup>TH</sup> @ 5:00pm ( Memorial Day Weekend )



Philadelphia's Jim Smith

Bob's Famous Wood-fired Oven  
TOMATO PIE  
with Sausage, Spinach and Mushrooms

JIM SMITH'S BACK FROM PHILLY

Pick-Up Food - Sweet Tea - Water

**BYOB - \$20 per person**

**RESERVATIONS REQUIRED**

**RAIN OR SHINE**



BreadWorks Fund-Raising Event



SUBSCRIBE TO OUR MONTHLY EMAIL NEWSLETTER

LEARN ABOUT THE BEN FRANKLIN SOCIETY

JOIN THE SOCIETY

BOOK A COMPANY OR GROUP MEETING AT THE CABIN



#### RESERVATIONS AND CURRENT MEMBERSHIP REQUIRED

( EXCEPT FOR BAKERY ORDERS )

CALL 252-767-1167 OR EMAIL [BOB@LYNCHCREEK.COM](mailto:BOB@LYNCHCREEK.COM)

**PAYMENT ACCEPTED BY CASH, CHECK OR CREDIT CARD**

INDOOR EVENTS - PAY WHEN YOU DEPART  
OUTDOOR EVENTS - PAY WHEN YOU ARRIVE

### MAY 2019 EVENTS

SUN	MON	TUE	WED	THU	FRI	SAT
			1	2	3	4
5	6	7	8	9	10	11
12	13	14	15	16	17	18
19	20	21	22	23	24	25
26	27	28	29	30	31	



# Lynch Creek Farm NEWS

CHARITABLE • TAX EXEMPT • NON-PROFIT • CORPORATION  
WITH EDUCATIONAL, CULTURAL AND ECONOMIC DEVELOPMENT FOCUS

BEN FRANKLIN SOCIETY  
NEWS

MAY 2019

## MISSION STATEMENT

*To enhance the educational, cultural and economic development of Franklin County by leveraging its natural and historic resources*

## ANNUAL SOCIETY

### MEMBERSHIP DUES

GUEST \$2.50 INDIVIDUAL \$7.50  
COUPLE \$15 FAMILY \$25  
GROUP \$50 CORPORATION \$100+

*“The Ben Franklin Society performs a collection of independent Research Projects”*

*“Society Members work on Projects either individually, or in collaboration with others”*

*“The Society meets yearly, while Projects maintain their own activity schedule”*

*“The Society provides funding, promotion and staffing assistance for all Projects”*

*“Project Leaders provide Status Reports that are included in our monthly Newsletter”*

*“Project Leaders are encouraged to utilize computer technology to assemble, communicate and publish their findings”*

## NEWSLETTER AND WEBSITE RE-DESIGN

YOU PROBABLY HAVE NOTICED OUR NEW FORMAT. WE HAVE RE-BRANDED OUR MONTHLY *BREADWORKS NEWSLETTER* - FIRST PUBLISHED IN MAY 2012 - AS *LYNCH CREEK FARM NEWS*, AND ADDED DEDICATED TOPIC PAGES ( PDF WITH EMBEDDED LINKS) TO PROVIDE COMPLETE COVERAGE OF ALL ONSITE LYNCH CREEK FARM ACTIVITIES

OUR WEBSITES - [LYNCHCREEK.COM](http://LYNCHCREEK.COM) AND [BENFRANKLINSOCIETYNC.ORG](http://BENFRANKLINSOCIETYNC.ORG) - HAVE BEEN GIVEN A FACELIFT WITH BETTER FOCUS, NAVIGATION AND ONLINE SERVICES

BEN FRANKLIN SOCIETY - BREADWORKS DINING - CABIN MEETINGS - EVENT VENUE - BAKERY

## CABIN BOOK & MEDIA CLUB / BEN FRANKLIN CIRCLE

Our Cabin Book & Media Club has grown to over 20 members who share a love of reading and literary endeavors. Read our selection, join us for a lively and challenging book discussion, with wine and hors d'oeuvres!

### OUR UPCOMING BOOK CLUB / MEDIA EVENTS

**TUESDAY, MAY 21<sup>ST</sup> AT 3:30PM**

### **“MY DEAR HAMILTON” BY STEPHANIE DRAY**

TO JOIN, CONTACT KERRY CARTER AT 267-973-8143

## GODADDY SOCIAL MEDIA MARKETING CAMPAIGN

Our GoDaddy Social ([www.mainstreethub.com](http://www.mainstreethub.com)) Campaign is still underway to help market all business activity at Lynch Creek Farm. Look for posts on Google Maps, Google My Business, Facebook, Instagram, Twitter and Yelp

LIKE AND FOLLOW OUR NEW FACEBOOK PAGE “LYNCH CREEK FARM”

Visit our revamped Websites at [LynchCreek.com](http://LynchCreek.com) and [BenFranklinSocietyNC.org](http://BenFranklinSocietyNC.org)

Help by sharing and making reviews and recommendations

Subscribe a Friend to our Newsletter

Bring a Friend as a Guest to an Event

## CONDOLENCES

BEN FRANKLIN SOCIETY EMERITUS MEMBER, WILLIAM “BILL” HILL’S WIFE, FRANCIS, DIED ON APRIL 9TH. THE SOCIETY EXTENDS ITS CONDOLENCES TO BILL AND THE FAMILY. IN LIEU OF FLOWERS, CONTRIBUTIONS MAY BE MADE TO THE LOUISBURG BAPTIST CHURCH NEIGHBORS FUND, LIBRARY FUND OR MUSIC FUND, PO Box 730, LOUISBURG, NC 27549.

## BEN FRANKLIN SOCIETY-PRODUCED VIDEO LINKS



*Lynch Creek Farm Cabin Tour*

*BreadWorks Tomato Pie with Bob Radcliffe*

*Colonial Hearth Day - 2014*

*Peggy’s Hearth & Garden - 2015*

*Peggy’s Colonial Kitchen Garden - UNC-TV*

*Peggy’s Kitchen (Open Hearth) - UNC-TV*

# Ben Franklin Society NEWS

ON THE WEB: [“WWW.BENFRANKLINSOCIETYNC.ORG”](http://WWW.BENFRANKLINSOCIETYNC.ORG) ON FACEBOOK AS: [“BEN FRANKLIN SOCIETY”](https://www.facebook.com/BENFRANKLINSOCIETY) AND [“LYNCH CREEK FARM”](https://www.facebook.com/LYNCHCREEKFARM)

## SUPPORT OUR PICK-UP SITE VENDORS

Mike at The Depot Gifts & More in Henderson

Paige at Blue Collie Coffee in Louisburg

Amy at Burnt Barrel  
(formerly Wine&Beer101 in Youngsville)

David at The Grain Mill Cooperative in Wake Forest

You can always arrange to Pick-Up Your Order at the  
Lynch Creek Farm Cabin

Our "SITES" Menu provides all the Pick-Up information you need: Google Map directions, Site address, hours of business, contact person and telephone number

## INCENTIVE DISCOUNT STRUCTURE

We continue to offer Discounts that encourage the purchase of larger Orders to help us offset the Credit Card Processing Fees we must absorb as a vendor.

Most Credit Card Fees are 2.9% + \$0.30 per Transaction.  
On a \$5 purchase, that amounts to about 9%.

Our graduated Discount Structure helps offset these costs by rewarding Customers who make larger Purchases

**Buy \$10 get 2% OFF**

**Buy \$15 get 4% OFF**

**Buy \$20+ get 6% OFF**

Thanks for your understanding!

## BAKER/TRAINEE OPPORTUNITY

I am looking for an Individual to assist with production and delivery each month. All Bread preparation, Baking and Packaging is performed onsite at the Lynch Creek Farm Cabin and Grounds.

**CONTACT: BOB RADCLIFFE**

**CALL/TEXT: 252-767-1167**

**EMAIL: [BOB@LYNCHCREEK.COM](mailto:BOB@LYNCHCREEK.COM)**

## OUR TOP SELLING PRODUCT

**HEARTY RUSTIC SEEDED BOULE**

## MAY 2019 SCHEDULE

PICK-UP DAY - THURSDAY THE 16<sup>TH</sup>

[WWW.LYNCHCREEK.COM/STORE](http://WWW.LYNCHCREEK.COM/STORE)

ORDER ONLINE NOW THRU MAY 13<sup>TH</sup>

INTRODUCE OUR BREADS TO YOUR FRIENDS

ADD A FRIEND TO OUR MAIL LIST - SHARE OUR POSTS ON FACEBOOK

### CONTACT US

CALL/TEXT: 252-767-1167

EMAIL: [BAKERY@LYNCHCREEK.COM](mailto:BAKERY@LYNCHCREEK.COM)

## TO RECEIVE BAKERY SCHEDULE NOTICES

- **SUBSCRIBE** to receive our monthly "Lynch Creek Farm NEWS" Email Newsletter

- **VISIT** our Bakery Home Page each month for Complete Details



# Lynch Creek Farm BAKERY





# Lynch Creek Farm NEWS

CHARITABLE • TAX EXEMPT • NON-PROFIT • CORPORATION  
WITH EDUCATIONAL, CULTURAL AND ECONOMIC DEVELOPMENT FOCUS

BEN FRANKLIN SOCIETY  
PROJECT REPORTS

MAY 2019

## GRIST MILL INVENTORY PROJECT

**Bob Radcliffe has re-activated this Ben Franklin Society (BFS) Project and is seeking Volunteers to help with Field Inventory and NC Archive Report Preparation and Filing**

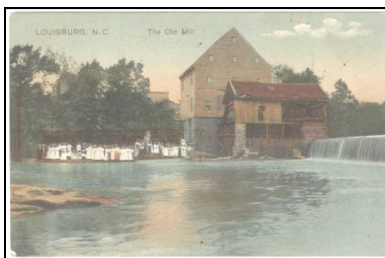
Preparatory work began in December 2018, with a visit to NCDCCR in Raleigh, to meet new Archaeology Site Registrar, Rosie Blewitt-Golsch. A Prototype Mill Site filing process has been developed that now enables us to proceed and finally accomplish the goals of this Project that Bob started in 2008.

We successfully completed our first Archaeological Site Filing on December 11<sup>TH</sup>, 2018. The **WHITAKER MILL on Lynch Creek** was assigned the **OSA-ID 31FK165**. Each Site is assigned a permanent Site-ID by the OSA Site Registrar.

As we complete and submit each Final Site Report, we will post redacted PDF versions on our BFS website.

We encourage you to download and review these Site Reports. Learn about the history of your Community.

Our March Field Trips netted missing GPS Coordinates and Photography, so that additional Site Reports could be finalized. Contact Bob Radcliffe to register for the Field Trip you want to attend. We will gather at the Lynch Creek Farm Cabin for a quick orientation before departing for 3-hours.



## MAY FIELD TRIP SCHEDULE

Wednesday May 8<sup>TH</sup> @ 9:00am

Contact: Bob Radcliffe at 252-767-1167

## GRIST MILL INVENTORY SITE REPORT STATUS

<u>SITE REPORT (ALPHABETIC ORDER)</u>	<u>OSA-ID</u>	<u>STATUS</u>
DYKING CHANNELIZATION of Lynch Creek	31FK176	<u>COMPLETED</u>
EDWARDS MILL on Eaves Creek trib. of Lynch Creek	31FK177	IN-PROCESS
GILL MILL on Lynch Creek	31FK178	<u>COMPLETED</u>
INDIAN GRINDING HOLES on Lynch Creek	31FK179	<u>COMPLETED</u>
INDIAN VILLAGE/MOUND nr. Lynch Creek at Tar River	31FK180	<u>COMPLETED</u>
LETHA abandoned town nr. Whitaker Mill on Lynch Creek	31FK184	<u>COMPLETED</u>
LOUISBURG MILL on Tar River	31FK181	<u>COMPLETED</u>
QUARRY nr. Whitaker Mill	31FK182	<u>COMPLETED</u>
STONE HOUSE in Rocky Ford nr. Gill Mill	31FK183	IN-PROCESS
WHITAKER MILL on Lynch Creek	31FK165	<u>COMPLETED</u>

**COMPLETED SITE REPORTS IN PDF-FORMAT ARE POSTED AT [WWW.BENFRANKLINSOCIETYNC.ORG](http://WWW.BENFRANKLINSOCIETYNC.ORG)**

( NAVIGATE TO THE PROJECTS / GRIST MILL INVENTORY MENU TO DOWNLOAD A COPY OR USE EMBEDDED-LINKS ABOVE )

## **Ben Franklin Society SERVICE PROJECT REPORT**

ON THE WEB: "[WWW.BENFRANKLINSOCIETYNC.ORG](http://WWW.BENFRANKLINSOCIETYNC.ORG)" ON FACEBOOK AS: "BEN FRANKLIN SOCIETY" AND "LYNCH CREEK FARM"



# Lynch Creek Farm NEWS

CHARITABLE • TAX EXEMPT • NON-PROFIT • CORPORATION  
WITH EDUCATIONAL, CULTURAL AND ECONOMIC DEVELOPMENT FOCUS

BEN FRANKLIN SOCIETY  
MEMBERSHIP

MAY 2019



## SINCE 2008, MEMBERSHIP DUES, AND THESE ADDITIONAL FUND-RAISING ACTIVITIES

BREADWORKS DINING AND ENTERTAINMENT EVENTS  
GROUP AND CORPORATE CABIN BUSINESS MEETINGS  
FLEA MARKET AND BENEFIT CONCERTS  
INDIVIDUAL DONATIONS  
GRANT WRITING

## . . HAVE FINANCED THE FOLLOWING SOCIETY PROJECTS

GRIST MILL INVENTORY (Computers, GPS, GIS software, A/V Equipment)  
COLONIAL HEARTH DAYS (Costumes, Student Supplies, Food)  
HISTORIC KITCHEN GARDEN (Building Supplies, Soil, Plants, Seeds)  
EARLY COLLEGE HIGH SCHOOL (Chromebooks, Carts, Calculators, Books)

WE HAVE STEADILY GROWN OUR MEMBERSHIP AND  
PERFORMED OUTSTANDING COMMUNITY SERVICE PROJECTS

HELP US CONTINUE TO MAKE A DIFFERENCE  
JOIN THE BEN FRANKLIN SOCIETY TODAY!



**RENEW  
ONLINE  
NOW!**

## **SOCIETY MEMBERSHIP DRIVE EVERYONE IS WELCOME**

WE NOW PROVIDE ONLINE MEMBERSHIP RENEWAL  
IT'S EASY AND FAST. CLICK ON THE FOLLOWING LINK.

### JOIN OR RENEW MY 2019 SOCIETY MEMBERSHIP!

YOUR ANNUAL DUES, DONATIONS, AND ATTENDANCE AT BREADWORKS  
EVENTS FUND OUR COMMUNITY PROJECTS

SUBSCRIBE A FRIEND TO OUR FREE NEWSLETTER!

## **Ben Franklin Society MEMBERSHIP**

ON THE WEB: "[WWW.BENFRANKLINSOCIETYNC.ORG](http://WWW.BENFRANKLINSOCIETYNC.ORG)" ON FACEBOOK AS: "BEN FRANKLIN SOCIETY" AND "LYNCH CREEK FARM"

# Lynch Creek Farm NEWS

"PHILADELPHIA STYLE WITH CAROLINA CHARACTER"

URBAN ELEGANCE • RURAL CHARM • SUSTAINABLE AND ORGANIC FOODS



LYNCH CREEK FARM CABIN

CLICK IMAGE TO GOOGLE MY BUSINESS

WELCOME TO LYNCH CREEK FARM  
AN EXCEPTIONAL BUSINESS MEETING, DINING AND  
ENTERTAINMENT VENUE RECOGNIZED BY THE  
RALEIGH NEWS & OBSERVER (N&O) AS THE  
"BEST KEPT SECRET IN FRANKLIN COUNTY"

OUR AUTHENTIC LOG CABIN PROVIDES WHAT  
PROPRIETOR BOB RADCLIFFE CALLS  
"PHILADELPHIA STYLE WITH CAROLINA CHARACTER"

THE CABIN BACK PORCH EXTENDS DINING SERVICE  
INTO THE TREETOPS, WHILE THE FRONT PORCH  
SEASONALLY FEATURES LIVE ENTERTAINMENT

## LYNCH CREEK FARM LOG CABIN EVENT VENUE



BUSINESS MEETINGS  
IN A RURAL SETTING  
WITH URBAN CONVENIENCES



PHILADELPHIA STYLE WITH CAROLINA CHARACTER

CLICK IMAGE TO DOWNLOAD  
LCF TRI-FOLD BROCHURE

MAKE A RESERVATION AND COME SEE  
FOR YOURSELF, THEN BOOK A BUSINESS  
OR GROUP MEETING AT THE CABIN OR  
PLAN AN OUTDOOR EVENT ON THE CABIN  
GROUNDS

BOB FOUNDED OUR NON-PROFIT,  
COMMUNITY SERVICE PARTNER,  
BEN FRANKLIN SOCIETY  
"TO ENHANCE THE EDUCATIONAL,  
CULTURAL AND ECONOMIC DEVELOPMENT  
OF FRANKLIN COUNTY  
BY LEVERAGING ITS NATURAL AND  
HISTORIC RESOURCES"

ALL EVENTS RAISE FUNDS TO SUPPORT  
THE BEN FRANKLIN SOCIETY

CONTACT BOB RADCLIFFE TO SCHEDULE  
A SITE VISIT

CALL/TEXT: 252-767-1167  
EMAIL: [BOB@LYNCHCREEK.COM](mailto:BOB@LYNCHCREEK.COM)



A charitable, tax-exempt  
corporation that performs  
independent and  
collaborative projects to  
enhance the educational,  
cultural and economic  
development of Franklin  
County by leveraging its  
natural and historical  
resources

CLICK IMAGE TO DOWNLOAD  
BFS TRI-FOLD BROCHURE

## Lynch Creek Farm MEETING • DINING • EVENT VENUE

ON THE WEB: "[WWW.LYNCHCREEK.COM](http://WWW.LYNCHCREEK.COM)" AND "[LYNCH-CREEK-FARM.BUSINESS.SITE](http://LYNCH-CREEK-FARM.BUSINESS.SITE)" ON FACEBOOK AS: "LYNCH CREEK FARM"






# Lynch Creek Farm NEWS

CHARITABLE • TAX EXEMPT • NON-PROFIT • CORPORATION  
WITH EDUCATIONAL, CULTURAL AND ECONOMIC DEVELOPMENT FOCUS

BEN FRANKLIN SOCIETY  
AFFILIATED GROUPS


MAY 2019

The Franklin County  
**ARTS Council**  
www.FCACArts.org

 **Perry Memorial Library**  
www.PerryLibrary.org

*Cedar Cross Retreat Center*  
www.CedarCrossRetreat.org

*The Performing Arts Center*  
  
**McGREGOR Hall**

 **American Wine Society**  
North Wake Chapter


**WINE & BEER 101**  
YOUNGSVILLE  
WINE SHOP, BEER STORE, BEER BAR  
FOOD TRUCK  
www.WineandBeer101.com/Youngville/

  
**Wake Forest Camera Club**  
www.wfccnc.org

**Capital City Camera Club**  
Raleigh, NC  
www.capcitycameraclub.com

*The Tar River Center*  
for History and Culture

**House & Garden Club**  
Henderson, NC

 **Franklin County**  
**EARLY COLLEGE HIGH SCHOOL**  
FCECHS

 **ROIREVOLUTION®**

 **WWW.GRAINMILL.COOP**  
*Open to the public*  
*Members save 10%*  
*No minimum order*

**Friends of H. Leslie Perry**  
**Memorial Library**  
www.perrylibrary.org/friendsoflibrary.html

**Wake Forest Garden Club**  
Wake Forest, NC

**N.C.C.A.R - Joel Lane Society**  
Children of American Revolution  
Raleigh, NC

  
**UnionBank**  
EVERY DAY BETTER

**LOUISBURG COLLEGE**  
www.louisburg.edu

**Twilight Gardeners Club**  
Henderson, NC

**Indoor-Outdoor Garden Club**  
Henderson, NC

**ALSTON-PLEASANTS**  
**POST-GRADUATE SCHOLARS FUND**  
www.alstonpleasants.org

  
**BLUE-COLLIE COFFEE - LOUISBURG, NC**

**CCB**  
CITIZENS COMMUNITY BANK  
You'll love banking here!  
www.ccb-site.com

**Roxboro Garden Club**  
Roxboro, NC

**Granville Garden Club**  
Oxford, NC

**First Baptist Church**  
Henderson, NC

  
**THE M DEPOT**  
GIFTS & MORE  
Henderson, NC 252-430-7771

 **PERSON PLACE**  
Preservation  
Society

**WOODLAND GARDEN CLUB**  
HENDERSON, NC

 **HOUSE CONCERTS**  
Lisa & Joel Wolf  
Youngsville, NC  
919-556-5068