

**LYNCH  
CREEK  
FARM**

MEETING, DINING & EVENT VENUE

# Lynch Creek Farm NEWS

MEETING • DINING • EVENT VENUE  
BEN FRANKLIN SOCIETY HEADQUARTERS

ON THE WEB: "WWW.LYNCHCREEK.COM" AND "WWW.BENFRANKLINSOCIETYNC.ORG"  
ON FACEBOOK AS: "LYNCH CREEK FARM" AND "BEN FRANKLIN SOCIETY"

## EVENT CALENDAR AUGUST 2019

1973 ROCKY FORD ROAD  
KITTELL, NC 27544  
CALL/TEXT 252-767-1167

### AUG 11<sup>TH</sup> - SUNDAY BRUNCH LITE AT 1:00PM

FRUIT/MUFFINS - SOFT SCRAMBLED EGGS - SAUSAGE/POTATO/BREADS - SORBET/COOKIE  
SPECIAL \$15 PER PERSON - BYOB - RESERVATIONS REQUIRED ( SEE PAGE-2 )



Fund-Raising Event

### AUG 15<sup>TH</sup> - BAKERY PICK-UP DAY - THURSDAY

ORDER ONLINE NOW AT [WWW.LYNCHCREEK.COM/STORE](http://WWW.LYNCHCREEK.COM/STORE)

PRODUCT OF THE MONTH - KUMMELWECK ROLLS ( SEE PAGE-3 )



### AUG 20<sup>TH</sup> - CABIN BOOK & MEDIA CLUB AT 3:30PM - TUESDAY

"EDUCATED" BY TARA WESTOVER ( SEE PAGE-2 )



### AUG 24<sup>TH</sup> - TOMATO PIE BUFFET WITH MUSIC AT 6:00PM - SATURDAY

OUTDOORS ON THE CABIN GROUNDS WITH LIVE FRONT PORCH MUSIC



BOB'S WOOD-FIRED OVEN  
TOMATO PIE  
FUND-RAISING EVENT

Bob's Famous Wood-fired Oven  
**TOMATO PIE**

with Sausage, Mushrooms and Spinach  
Salad - Dips - Sweet Tea - Water

**MUSIC BY LOST IN HARMONY**

**PHIL LANIER & FRIENDS**

BYOB - \$20 per person

RESERVATIONS REQUIRED - RAIN OR SHINE



LOST IN HARMONY  
PHIL LANIER & FRIENDS

### PRIVATE EVENT BOOKINGS

WEDDING PARTY - 31st

CONSIDER LYNCH CREEK FARM WHEN PLANNING A PRIVATE EVENT



**RESERVATIONS & MEMBERSHIP REQUIRED**  
EXCEPT FOR BAKERY ORDERS

EMAIL [BOB@LYNCHCREEK.COM](mailto:BOB@LYNCHCREEK.COM)

OR

CALL 252-767-1167

INDOOR EVENTS - PAY WHEN YOU DEPART  
OUTDOOR EVENTS - PAY WHEN YOU ARRIVE

## AUGUST 2019

Sun	Mon	Tue	Wed	Thu	Fri	Sat
				1	2	3
4	5	6	7	8	9	10
FE	12	13	14	BK	16	17
18	19	BC	21	22	23	FE
25	26	27	28	29	30	PE

PAYMENT ACCEPTED BY CASH, CHECK OR CREDIT CARD

BC Book-Club BK Bakery FE Fundraising-Event PE Private-Event



# Lynch Creek Farm NEWS

CHARITABLE • TAX EXEMPT • NON-PROFIT • CORPORATION  
WITH EDUCATIONAL, CULTURAL AND ECONOMIC DEVELOPMENT FOCUS

BEN FRANKLIN SOCIETY  
NEWS

AUGUST 2019

## MISSION STATEMENT

*To enhance the educational, cultural and economic development of Franklin County by leveraging its natural and historic resources*

## ANNUAL SOCIETY

### MEMBERSHIP DUES

GUEST \$2.50 INDIVIDUAL \$7.50  
COUPLE \$15 FAMILY \$25  
GROUP \$50 CORPORATION \$100+

*“The Ben Franklin Society performs a collection of independent Research Projects”*

*“Society Members work on Projects either individually, or in collaboration with others”*

*“The Society meets yearly, while Projects maintain their own activity schedule”*

*“The Society provides funding, promotion and staffing assistance for all Projects”*

*“Project Leaders provide Status Reports that are included in our monthly Newsletter”*

*“Project Leaders are encouraged to utilize computer technology to assemble, communicate and publish their findings”*

## CABIN DINING IN AUGUST

WE SEASONALLY VARY OUR DINING EVENTS AT THE CABIN  
SUNDAY BRUNCHES ARE POPULAR DURING THE FALL AND WINTER MONTHS

We are introducing a NEW SUNDAY BRUNCH LITE AT \$15 PER PERSON

**AUGUST 11<sup>TH</sup> AT 1:00PM**

Casual - Summer Fare - Indoor - Outdoor

AS ALWAYS - RESERVATIONS REQUIRED - BYOB

## CABIN BOOK & MEDIA CLUB / BEN FRANKLIN CIRCLE

Our Cabin Book & Media Club has grown to over 20 members who share a love of reading and literary endeavors. Read our selection, join us for a lively and challenging book discussion, with wine and hors d'oeuvres!

**OUR UPCOMING BOOK CLUB / MEDIA EVENTS**

**TUESDAY, AUGUST 20<sup>TH</sup> AT 3:30PM**

**“EDUCATED” BY TARA WESTOVER**

TO JOIN, CONTACT KERRY CARTER AT 267-973-8143

## SOCIAL MEDIA MARKETING CAMPAIGN UPDATE

HELP LEVERAGE OUR MARKETING EFFORTS BY WRITING AN ONLINE REVIEW

TO MAKE THIS PROCESS EASIER FOR YOU, WE WILL BEGIN USING A NEW WORDPRESS PLUGIN “STARFISH REVIEWS” WHICH EXTENDS THE NOTION OF MARKETING FUNNELS TO ONLINE REVIEWS

WITH A SIMPLE CLICK, YOU SELECT AN ONLINE PLATFORM (GOOGLE, FACEBOOK . . . ) AND ARE TAKEN IMMEDIATELY TO THE APPROPRIATE REVIEW PAGE

**REVIEWS HAVE FAR MORE IMPACT THAN FACEBOOK LIKES**

**PLEASE HELP - WRITE AN ONLINE REVIEW !**



**SUBSCRIBE TO OUR MONTHLY EMAIL NEWSLETTER**

**LEARN ABOUT THE BEN FRANKLIN SOCIETY**

**JOIN THE SOCIETY**

**BOOK A COMPANY OR GROUP MEETING AT THE CABIN**

## BEN FRANKLIN SOCIETY-PRODUCED VIDEO LINKS



*Lynch Creek Farm Cabin Tour*

*BreadWorks Tomato Pie with Bob Radcliffe*

*Colonial Hearth Day - 2014*

*Peggy's Hearth & Garden - 2015*

*Peggy's Colonial Kitchen Garden - UNC-TV*

*Peggy's Kitchen (Open Hearth) - UNC-TV*

# Ben Franklin Society NEWS

ON THE WEB: “[WWW.BENFRANKLINSOCIETYNC.ORG](http://WWW.BENFRANKLINSOCIETYNC.ORG)” ON FACEBOOK AS: “BEN FRANKLIN SOCIETY” AND “LYNCH CREEK FARM”

## KUMMELWECK ROLLS



A KAISER-LIKE ROLL WITH A COURSE SALT AND CARAWAY SEED TOPPING. MADE FAMOUS IN BUFFALO, NY FOR INCREDIBLE "BEEF ON WECK" SANDWICHES

PERHAPS ROCKY FORD, NC CAN BECOME FAMOUS FOR INTRODUCING "CUE ON WECK" SANDWICHES IN THE SOUTH

## PORTRAIT OF A PIE MAKER

Thanks to Rocky Ford, NC Photographer and Communications Specialist, Charles Gupton, for his recent Facebook Post and Portrait from our July 25th Tomato Pie Buffet that featured Front Porch Music by Rick & Betty Newsome Drybread Road



The weather was perfect - a welcome change from our recent heat, humidity and rainfall

## SUPPORT OUR PICK-UP SITE VENDORS

Mike at ***The Depot Gifts & More in Henderson***

Paige at ***Blue Collie Coffee in Louisburg***

Amy at ***The Burnt Barrel***  
(formerly ***Wine&Beer101 in Youngsville***)

David at ***The Grain Mill Cooperative in Wake Forest***

You can always arrange to Pick-Up Your Order at the ***Lynch Creek Farm Cabin***

Our "**SITES**" Menu provides all the Pick-Up information you need: Google Map directions, Site address, hours of business, contact person and telephone number

## INCENTIVE DISCOUNT STRUCTURE

We continue to offer Discounts that encourage the purchase of larger Orders to help us offset the Credit Card Processing Fees we must absorb as a vendor.

Our graduated Discount Structure helps offset these costs by rewarding Customers who make larger Purchases

Buy \$10 get 2% OFF

Buy \$15 get 4% OFF

Buy \$20+ get 6% OFF

## AUGUST 2019 SCHEDULE PICK-UP DAY - THURSDAY THE 15<sup>TH</sup>

[WWW.LYNCHCREEK.COM/STORE](http://WWW.LYNCHCREEK.COM/STORE)

ORDER ONLINE NOW THRU AUGUST 12<sup>TH</sup>

INTRODUCE OUR BREADS TO YOUR FRIENDS  
ADD A FRIEND TO OUR MAIL LIST - SHARE OUR POSTS ON FACEBOOK

### CONTACT US

CALL/TEXT: 252-767-1167  
EMAIL: [BAKERY@LYNCHCREEK.COM](mailto:BAKERY@LYNCHCREEK.COM)

## TO RECEIVE BAKERY SCHEDULE NOTICES

- **SUBSCRIBE** to receive our monthly "Lynch Creek Farm NEWS" Email Newsletter
- **VISIT** our Bakery Home Page each month for Complete Details





# Lynch Creek Farm NEWS

CHARITABLE • TAX EXEMPT • NON-PROFIT • CORPORATION  
WITH EDUCATIONAL, CULTURAL AND ECONOMIC DEVELOPMENT FOCUS

BEN FRANKLIN SOCIETY  
PROJECT REPORTS

AUGUST 2019

## GRIST MILL INVENTORY PROJECT

**Bob Radcliffe has re-activated this Ben Franklin Society (BFS) Project and is seeking Volunteers to help with Field Inventory and NC Archive Report Preparation and Filing**

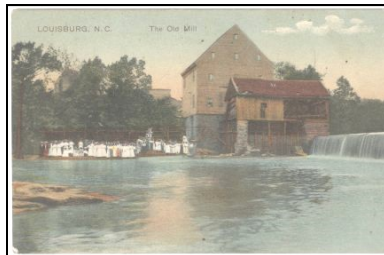
Preparatory work began in December 2018, with a visit to NCDCCR in Raleigh, to meet new Archaeology Site Registrar, Rosie Blewitt-Golsch. A Prototype Mill Site filing process has been developed that now enables us to proceed and finally accomplish the goals of this Project that Bob started in 2008.

We successfully completed our first Archaeological Site Filing on December 11<sup>TH</sup>, 2018. The **WHITAKER MILL on Lynch Creek** was assigned the **OSA-ID 31FK165**. Each Site is assigned a permanent Site-ID by the OSA Site Registrar.

As we complete and submit each Final Site Report, we will post redacted PDF versions on our BFS website.

We encourage you to download and review these Site Reports. Learn about the history of your Community.

Our March Field Trips netted missing GPS Coordinates and Photography, so that additional Site Reports could be finalized. Contact Bob Radcliffe to register for the Field Trip you want to attend. We will gather at the Lynch Creek Farm Cabin for a quick orientation before departing for 3-hours.



## FIELD TRIP SCHEDULE

By Appointment until Fall

Contact: Bob Radcliffe at 252-767-1167

## GRIST MILL INVENTORY SITE REPORT STATUS

<u>SITE REPORT (ALPHABETIC ORDER)</u>	<u>OSA-ID</u>	<u>STATUS</u>
DYKING CHANNELIZATION of Lynch Creek	31FK176	<u>COMPLETED</u>
EDWARDS MILL on Eaves Creek trib. of Lynch Creek	31FK177	IN-PROCESS
GILL MILL on Lynch Creek	31FK178	<u>COMPLETED</u>
INDIAN GRINDING HOLES on Lynch Creek	31FK179	<u>COMPLETED</u>
INDIAN VILLAGE/MOUND nr. Lynch Creek at Tar River	31FK180	<u>COMPLETED</u>
LETHA abandoned town nr. Whitaker Mill on Lynch Creek	31FK184	<u>COMPLETED</u>
LOUISBURG MILL on Tar River	31FK181	<u>COMPLETED</u>
QUARRY nr. Whitaker Mill	31FK182	<u>COMPLETED</u>
STONE HOUSE in Rocky Ford nr. Gill Mill	31FK183	IN-PROCESS
WHITAKER MILL on Lynch Creek	31FK165	<u>COMPLETED</u>

**COMPLETED SITE REPORTS IN PDF-FORMAT ARE POSTED AT [WWW.BENFRANKLINSOCIETYNC.ORG](http://WWW.BENFRANKLINSOCIETYNC.ORG)**

( NAVIGATE TO THE PROJECTS / GRIST MILL INVENTORY MENU TO DOWNLOAD A COPY OR USE EMBEDDED-LINKS ABOVE )

## **Ben Franklin Society SERVICE PROJECT REPORT**

ON THE WEB: "[WWW.BENFRANKLINSOCIETYNC.ORG](http://WWW.BENFRANKLINSOCIETYNC.ORG)" ON FACEBOOK AS: "BEN FRANKLIN SOCIETY" AND "LYNCH CREEK FARM"



# Lynch Creek Farm NEWS

CHARITABLE • TAX EXEMPT • NON-PROFIT • CORPORATION  
WITH EDUCATIONAL, CULTURAL AND ECONOMIC DEVELOPMENT FOCUS

BEN FRANKLIN SOCIETY  
MEMBERSHIP

AUGUST 2019



SINCE 2008, MEMBERSHIP DUES, AND THESE  
ADDITIONAL FUND-RAISING ACTIVITIES . .

BREADWORKS DINING AND ENTERTAINMENT EVENTS  
GROUP AND CORPORATE CABIN BUSINESS MEETINGS

FLEA MARKET AND BENEFIT CONCERTS

INDIVIDUAL DONATIONS

GRANT WRITING

. . HAVE FINANCED THE FOLLOWING SOCIETY PROJECTS

GRIST MILL INVENTORY (Computers, GPS, GIS software, A/V Equipment)

COLONIAL HEARTH DAYS (Costumes, Student Supplies, Food)

HISTORIC KITCHEN GARDEN (Building Supplies, Soil, Plants, Seeds)

EARLY COLLEGE HIGH SCHOOL (Chromebooks, Carts, Calculators, Books)

WE HAVE STEADILY GROWN OUR MEMBERSHIP AND  
PERFORMED OUTSTANDING COMMUNITY SERVICE PROJECTS  
HELP US CONTINUE TO MAKE A DIFFERENCE  
JOIN THE BEN FRANKLIN SOCIETY TODAY!

## SOCIETY MEMBERSHIP DRIVE EVERYONE IS WELCOME

WE NOW PROVIDE ONLINE MEMBERSHIP RENEWAL  
IT'S EASY AND FAST. CLICK ON THE FOLLOWING LINK.

JOIN OR RENEW MY 2019 SOCIETY MEMBERSHIP!

YOUR ANNUAL DUES, DONATIONS, AND ATTENDANCE AT BREADWORKS  
EVENTS FUND OUR COMMUNITY PROJECTS

SUSCRIBE A FRIEND TO OUR FREE NEWSLETTER!



RENEW  
ONLINE  
NOW!

## Ben Franklin Society MEMBERSHIP

ON THE WEB: "[WWW.BENFRANKLINSOCIETYNC.ORG](http://WWW.BENFRANKLINSOCIETYNC.ORG)" ON FACEBOOK AS: "BEN FRANKLIN SOCIETY" AND "LYNCH CREEK FARM"

# Lynch Creek Farm NEWS

"PHILADELPHIA STYLE WITH CAROLINA CHARACTER"

URBAN ELEGANCE • RURAL CHARM • SUSTAINABLE AND ORGANIC FOODS

**LYNCH CREEK FARM  
EVENT VENUE**

**AUGUST 2019**



**LYNCH CREEK FARM CABIN**

**CLICK IMAGE TO GOOGLE MY BUSINESS**

WELCOME TO LYNCH CREEK FARM  
AN EXCEPTIONAL BUSINESS MEETING, DINING AND  
ENTERTAINMENT VENUE RECOGNIZED BY THE  
RALEIGH NEWS & OBSERVER (N&O) AS THE  
"BEST KEPT SECRET IN FRANKLIN COUNTY"

OUR AUTHENTIC LOG CABIN PROVIDES WHAT  
PROPRIETOR BOB RADCLIFFE CALLS  
"PHILADELPHIA STYLE WITH CAROLINA CHARACTER"

THE CABIN BACK PORCH EXTENDS DINING SERVICE  
INTO THE TREETOPS, WHILE THE FRONT PORCH  
SEASONALLY FEATURES LIVE ENTERTAINMENT

## LYNCH CREEK FARM LOG CABIN EVENT VENUE



**BUSINESS MEETINGS  
IN A RURAL SETTING  
WITH URBAN CONVENIENCES**



PHILADELPHIA STYLE WITH CAROLINA CHARACTER

**CLICK IMAGE TO DOWNLOAD  
LCF TRI-FOLD BROCHURE**

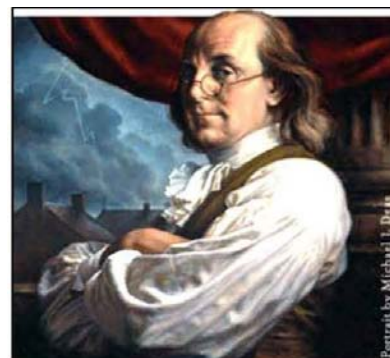
MAKE A RESERVATION AND COME SEE  
FOR YOURSELF, THEN BOOK A BUSINESS  
OR GROUP MEETING AT THE CABIN OR  
PLAN AN OUTDOOR EVENT ON THE CABIN  
GROUNDS

BOB FOUNDED OUR NON-PROFIT,  
COMMUNITY SERVICE PARTNER,  
BEN FRANKLIN SOCIETY  
"TO ENHANCE THE EDUCATIONAL,  
CULTURAL AND ECONOMIC DEVELOPMENT  
OF FRANKLIN COUNTY  
BY LEVERAGING ITS NATURAL AND  
HISTORIC RESOURCES"

ALL EVENTS RAISE FUNDS TO SUPPORT  
THE BEN FRANKLIN SOCIETY

CONTACT BOB RADCLIFFE TO SCHEDULE  
A SITE VISIT

CALL/TEXT: 252-767-1167  
EMAIL: [BOB@LYNCHCREEK.COM](mailto:BOB@LYNCHCREEK.COM)



A charitable, tax-exempt  
corporation that performs  
independent and  
collaborative projects to  
enhance the educational,  
cultural and economic  
development of Franklin  
County by leveraging its  
natural and historical  
resources

**CLICK IMAGE TO DOWNLOAD  
BFS TRI-FOLD BROCHURE**

## Lynch Creek Farm MEETING • DINING • EVENT VENUE

ON THE WEB: "[WWW.LYNCHCREEK.COM](http://WWW.LYNCHCREEK.COM)" AND "[LYNCH-CREEK-FARM.BUSINESS.SITE](http://LYNCH-CREEK-FARM.BUSINESS.SITE)" ON FACEBOOK AS: "LYNCH CREEK FARM"



# Lynch Creek Farm NEWS

CHARITABLE • TAX EXEMPT • NON-PROFIT • CORPORATION  
WITH EDUCATIONAL, CULTURAL AND ECONOMIC DEVELOPMENT FOCUS

BEN FRANKLIN SOCIETY  
AFFILIATED GROUPS


AUGUST 2019

The Franklin County  
**ARTS Council**  
[www.FCACArts.org](http://www.FCACArts.org)

 **Perry Memorial Library**  
[www.PerryLibrary.org](http://www.PerryLibrary.org)

*Cedar Cross Retreat Center*  
[www.CedarCrossRetreat.org](http://www.CedarCrossRetreat.org)

*The Performing Arts Center*  
  
**McGREGOR Hall**

 **American Wine Society**  
North Wake Chapter


**WINE & BEER 101**  
YOUNGSVILLE  
WINE SHOP, BEER STORE, BEER BAR  
FOOD TRUCK  
[www.WineandBeer101.com/Youngville/](http://www.WineandBeer101.com/Youngville/)

  
**Wake Forest Camera Club**  
[www.wfccnc.org](http://www.wfccnc.org)

**Capital City Camera Club**  
Raleigh, NC  
[www.capcitycameraclub.com](http://www.capcitycameraclub.com)

*The Tar River Center*  
for History and Culture

**House & Garden Club**  
Henderson, NC

 **Franklin County**  
**EARLY COLLEGE HIGH SCHOOL**  
FCECHS

 **ROIREVOLUTION®**

 [WWW.GRAINMILL.COOP](http://WWW.GRAINMILL.COOP)  
Open to the public  
Members save 10%  
No minimum order

**Friends of H. Leslie Perry  
Memorial Library**  
[www.perrylibrary.org/friendsoflibrary.html](http://www.perrylibrary.org/friendsoflibrary.html)

**Wake Forest Garden Club**  
Wake Forest, NC

**N.C.C.A.R - Joel Lane Society**  
Children of American Revolution  
Raleigh, NC

 **UnionBank**  
EVERY DAY BETTER

**LOUISBURG COLLEGE**  
[www.louisburg.edu](http://www.louisburg.edu)

**Twilight Gardeners Club**  
Henderson, NC

**Indoor-Outdoor Garden Club**  
Henderson, NC

**ALSTON-PLEASANTS  
POST-GRADUATE SCHOLARS FUND**  
[www.alstonpleasants.org](http://www.alstonpleasants.org)

  
**BLUE-COLLIE COFFEE - LOUISBURG, NC**

**CCB**  
CITIZENS COMMUNITY BANK  
You'll love banking here!  
[www.ccb-site.com](http://www.ccb-site.com)

**Roxboro Garden Club**  
Roxboro, NC

**Granville Garden Club**  
Oxford, NC

**First Baptist Church**  
Henderson, NC

  
Henderson, NC 252-430-7771

 **PERSON PLACE  
Preservation  
Society**

**WOODLAND GARDEN CLUB**  
HENDERSON, NC

 **HOUSE CONCERTS**  
Lisa & Joel Wolf  
Youngsville, NC  
919-556-5068