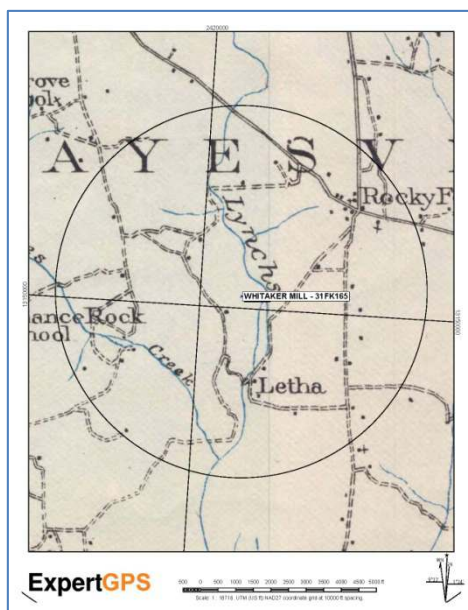


TOWN OF LETHA - 31FK184



LOCATION

Redacted per OSA Request

ACCESS

Redacted per OSA Request

REFERENCES

<https://lynchcreek.com/2008-jan-lynch-creek-journal-by-bob-radcliffe/>

DOCUMENT INDEX

MAPS see PAGE-2

PHOTOGRAPHY see PAGE-4

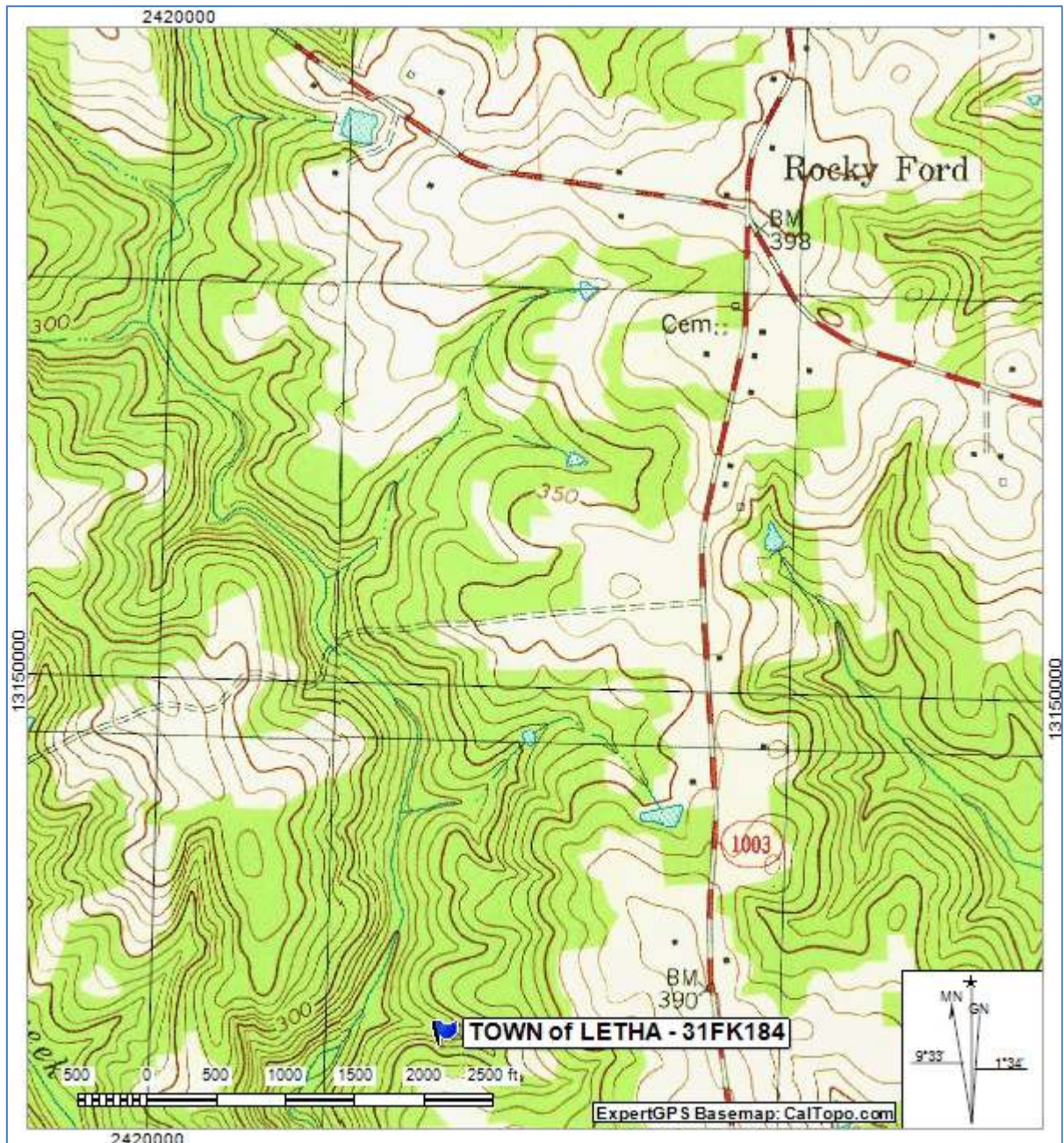
REFERENCE MATERIALS see PAGE-7

NC OSA SITE: 31FK184 – TOWN OF LETHA

by Robert (Bob) Radcliffe - BEN FRANKLIN SOCIETY (128) – March 31, 2019



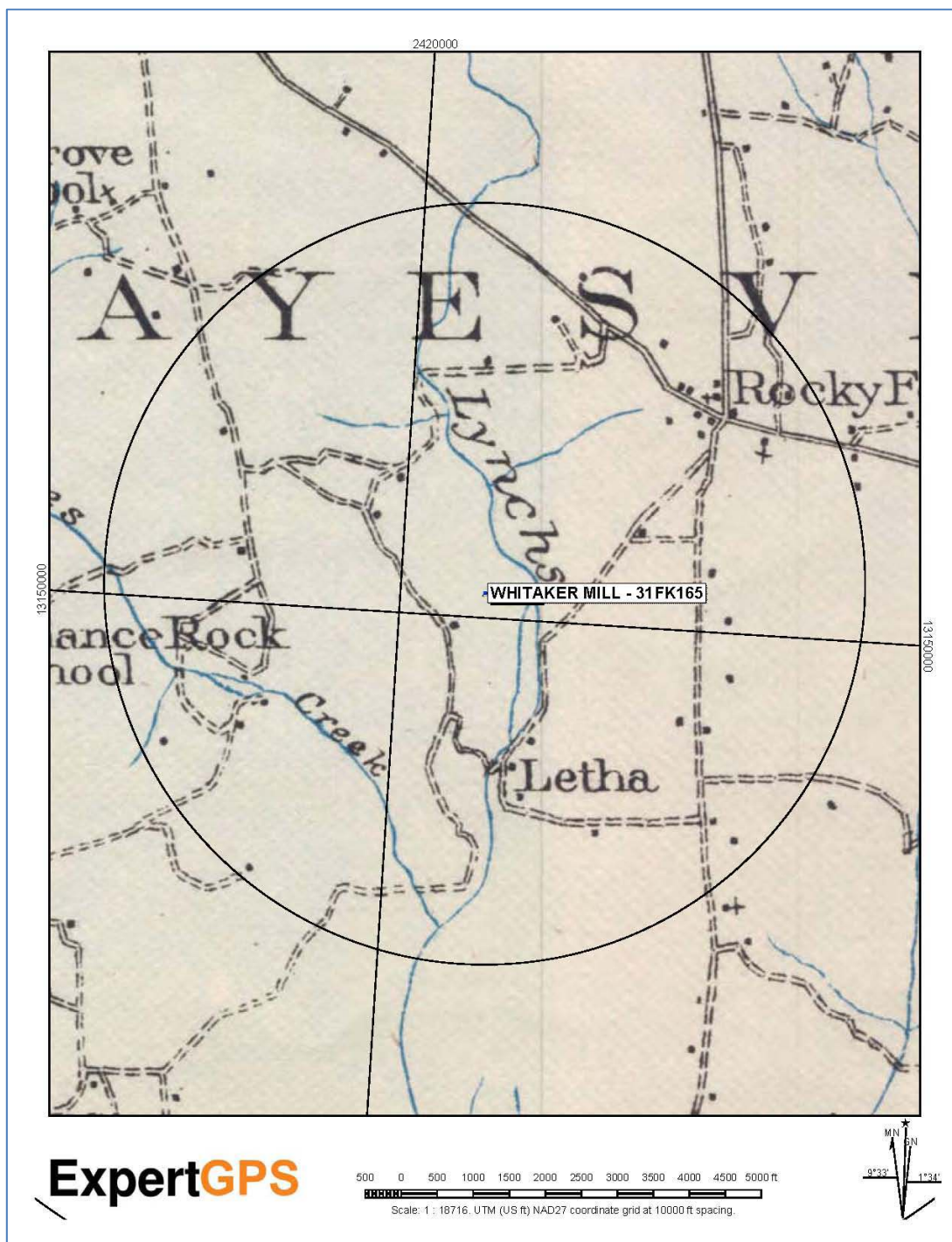
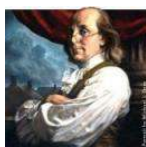
===== MAPS =====



[USGS Topo NC Ingleside, 1:24000, 1979]

NC OSA SITE: 31FK184 – TOWN OF LETHA

by Robert (Bob) Radcliffe - BEN FRANKLIN SOCIETY (128) – March 31, 2019



Town of Letha shown above. Note building site markings. There was a Miller's House, General Store, Post Office and Cemetery supporting the nearby Whitaker Mill (31FK165).
[Franklin County, NC Pratt Map 1906-1907]

NC OSA SITE: 31FK184 – TOWN OF LETHA

by Robert (Bob) Radcliffe - BEN FRANKLIN SOCIETY (128) – March 31, 2019



===== PHOTOGRAPHY =====



Miller's House (Whitaker Mill 31FK165) near Letha pathway to the Whitaker Mill
Photo by Bob Radcliffe July 2008

NC OSA SITE: 31FK184 – TOWN OF LETHA

by Robert (Bob) Radcliffe - BEN FRANKLIN SOCIETY (128) – March 31, 2019



Foundation stone remains of the Letha General Store (and Post Office). The area had been forested within the last 5-years. Photo by Bob Radcliffe - January 2019.

NC OSA SITE: 31FK184 – TOWN OF LETHA

by Robert (Bob) Radcliffe - BEN FRANKLIN SOCIETY (128) – March 31, 2019



Hilltop Cemetery at Letha. Little know. This is the most prominent grave. Many surrounding unmarked rows of sunken graves. No headstones. Photo by Bob Radcliffe - January 2019

NC OSA SITE: 31FK184 – TOWN OF LETHA

by Robert (Bob) Radcliffe - BEN FRANKLIN SOCIETY (128) – March 31, 2019



===== REFERENCE MATERIALS =====

LETHA

FROM: <https://lynchcreek.com/2008-jan-lynch-creek-journal-by-bob-radcliffe/>

A town named Letha (pronounced "lee-tha", smaller than Rocky Ford) once flourished in the vicinity of Whitaker Mill, and was designated a US Postal Office from 1890-1910. Mill operator, Thomas H. Whitaker (T.H.), is listed as a "Merchant not in Towns" from Letha in the 1907 North Carolina Year Book section on Franklin County.

Letha consisted of a General Store (Post Office), a Miller's House, supporting storage buildings, and a cemetery.

Surprisingly, Letha vanished in the 1950's, but the nearby Rocky Ford remains – if only as a namesake for the forgotten Haysville-Millford Crossroad.

The name Letha is a variant "Lethe" from Greek Mythology which is one of five Rivers in Hades that means "River of Oblivion". A cup of water from "Lethe" makes you forget everything from your former life. Your soul may then cross the River Styx with help from Charon the Oarsman.