

**LYNCH
CREEK
FARM**

MEETING, DINING & EVENT VENUE

Lynch Creek Farm NEWS

**BEN FRANKLIN SOCIETY HEADQUARTERS
MEETING • DINING • EVENT VENUE**

ON THE WEB: "WWW.LYNCHCREEK.COM" AND "WWW.BENFRANKLINSOCIETYNC.ORG"
ON FACEBOOK AS: "[LYNCH CREEK FARM](#)" AND "[BEN FRANKLIN SOCIETY](#)"

JANUARY 2020 EVENT CALENDAR

LYNCH CREEK FARM
1973 ROCKY FORD ROAD
KITTRELL, NC 27544
CALL/TEXT 252-767-1167

JAN 21ST

CABIN BOOK & MEDIA CLUB - TUESDAY

"DEAD WAKE" BY ERIK LARSON"

SEE PAGE-3 AND CONTACT KERRY CARTER AT 267-973-8143



JAN 23RD

BAKERY PICK-UP DAY - THURSDAY

ORDER ONLINE NOW AT WWW.LYNCHCREEK.COM/STORE

Order Online by Monday January 20th - also CUSTOM ORDERS

SEE PAGE-7 • FIVE CONVENIENT PICK-UP SITES



JAN 26TH

SUNDAY BRUNCH AT 1:00PM

WHITE BEAN SOUP AND ANTIPASTO SALAD

VEGETARIAN LASAGNA WITH BOB'S MEATBALLS

TASTY POTATOES FRESH BAKERY BAQUETTES

CLASSIC ITALIAN CANNOLI

COFFEES, TEAS, JUICES AND SETUPS FOR MIMOSA'S & BLOODY MARY'S

\$20 PER PERSON - BYOB - RESERVATIONS REQUIRED



NEW 2020 MEMBERSHIP CAMPAIGN

Check your Membership Status and Renew Online

See PAGE-3

NEW ONLINE REVIEW INITIATIVE

Help by Writing Online Reviews

See PAGE-2

JANUARY GRIST MILL INVENTORY FIELD TRIPS

Join us on a Grist Mill Inventory Field Trip

See PAGE-4

**Happy
New Year
2020**



JANUARY 2020 EVENTS

Sun	Mon	Tue	Wed	Thu	Fri	Sat
			1	2	3	4
5	6	7	8	PR	10	11
12	13	PR	15	16	17	18
19	20	BC	22	BK	24	25
FE	27	28	PR	30	31	

BC Book-Club BK Bakery FE Fundraising PE Private PR Project

RESERVATIONS & MEMBERSHIP REQUIRED

(EXCEPT FOR BAKERY ORDERS - SEE PAGE-7)

INDOOR EVENTS - PAY WHEN YOU DEPART

OUTDOOR EVENTS - PRE-PAY ONLINE

PAYMENT ACCEPTED BY

CASH, CHECK OR CREDIT CARD

BOOK A MEETING OR PRIVATE EVENT

EMAIL bob@lynchcreek.com OR CALL/TEXT 252-767-1167



Lynch Creek Farm NEWS

CHARITABLE • TAX EXEMPT • NON-PROFIT • CORPORATION
WITH EDUCATIONAL, CULTURAL AND ECONOMIC DEVELOPMENT FOCUS

BEN FRANKLIN SOCIETY
NEWS

JANUARY 2020

MISSION STATEMENT

To enhance the educational, cultural and economic development of Franklin County by leveraging its natural and historic resources

ANNUAL SOCIETY MEMBERSHIP DUES

GUEST \$5 INDIVIDUAL \$10
COUPLE \$15 FAMILY \$25
GROUP \$50 BUSINESS \$100+

“The Ben Franklin Society performs a collection of independent Research Projects”

“Society Members work on Projects either individually, or in collaboration with others”

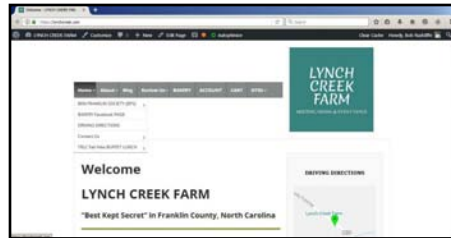
“The Society meets yearly, while Projects maintain their own activity schedule”

“The Society provides funding, promotion and staffing assistance for all Projects”

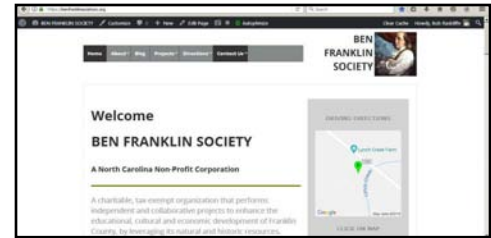
“Project Leaders provide Status Reports that are included in our monthly Newsletter”

“Project Leaders are encouraged to utilize computer technology to assemble, communicate and publish their findings”

VISIT OUR WEBSITES - MOBILE-FRIENDLY AND RESPONSIVE

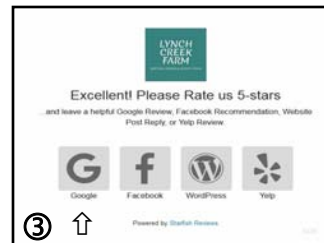
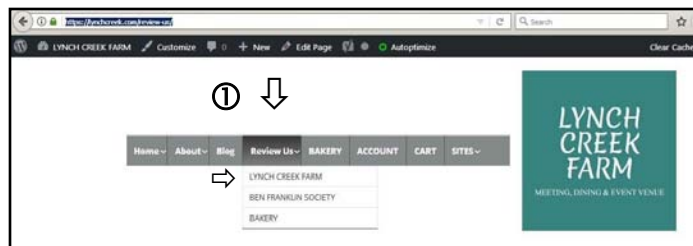


www.lynchcreek.com



www.benfranklinsocietync.org

TO WRITE A REVIEW - SELECT THE “REVIEW-US” MENU



- ① SELECT “REVIEW-US” MENU, THEN A SITE TO REVIEW
- ② SELECT YOUR REVIEW TYPE FAVORABLE (OR UNFAVORABLE)
- ③ SELECT A PLATFORM TO WRITE A REVIEW
- ④ WRITE YOUR REVIEW, COMMENT OR RECOMMENDATION
- ⑤ REPEAT THIS PROCESS FOR ANOTHER SITE AND/OR PLATFORM

Annual Board of Directors Meeting Update

I am pleased to introduce three *new* Board Members: Ken Billings, Jim Casazza and Denis Kingberg - all long-standing Society Members with excellent professional experience who will serve as Advisors.

2020 Membership Dues

The Board has voted to adjust the Dues for Guests from \$2.50 to \$5 and for Individuals from \$7.50 to \$10. All other Membership Dues remain the same.

BEN FRANKLIN SOCIETY-PRODUCED VIDEO LINKS



- [Lynch Creek Farm Cabin Tour](#)
- [BreadWorks Tomato Pie with Bob Radcliffe](#)
- [Colonial Hearth Day - 2014](#)
- [Peggy's Hearth & Garden - 2015](#)
- [Peggy's Colonial Kitchen Garden - UNC-TV](#)
- [Peggy's Kitchen \(Open Hearth\) - UNC-TV](#)

Ben Franklin Society NEWS

ON THE WEB: “WWW.BENFRANKLINSOCIETYNC.ORG” ON FACEBOOK AS: “BEN FRANKLIN SOCIETY” AND “LYNCH CREEK FARM”



Lynch Creek Farm NEWS

CHARITABLE • TAX EXEMPT • NON-PROFIT • CORPORATION
WITH EDUCATIONAL, CULTURAL AND ECONOMIC DEVELOPMENT FOCUS

BEN FRANKLIN SOCIETY
NEWS

JANUARY 2020



2020 SOCIETY MEMBERSHIP DRIVE

YOUR ANNUAL DUES, DONATIONS, AND ATTENDANCE AT BREADWORKS
EVENTS FUND OUR COMMUNITY SERVICE PROJECTS

SUBSCRIBE TO OUR FREE NEWSLETTER *ONLINE*

CHECK YOUR MEMBERSHIP STATUS *ONLINE*

ANNUAL SOCIETY MEMBERSHIP DUES

GUEST \$5 INDIVIDUAL \$10
COUPLE \$15 FAMILY \$25
GROUP \$50 BUSINESS \$100+



CHECK Your Membership STATUS

PAY YOUR MEMBERSHIP DUES *ONLINE*

(SOCIETY MEMBERSHIP NOW EXTENDS 1-YEAR FROM YOUR PAYMENT DATE)



EVERYONE IS WELCOME!

Subscription to our Monthly Newsletter is FREE, but if you wish to attend an advertised BreadWorks Event, you must become a Society Member.

We are a "Private Club" under North Carolina Law. Therefore, all BreadWorks Events may only serve Members. Our Annual Membership Fees are low by design, as not to be a deterrent for anyone to join

BECOME A MEMBER TODAY

CABIN BOOK & MEDIA CLUB / BEN FRANKLIN CIRCLE

Our Cabin Book & Media Club has grown to over 20 members who share a love of Reading and Literary Endeavors. Read our selection, join us for a lively and challenging book discussion, with wine and hors d'oeuvres!

TUESDAY, JANUARY 21ST AT 3:30PM

"DEAD WAKE" BY ERIK LARSON

FOR COMPLETE DETAILS, CONTACT KERRY CARTER AT 267-973-8143

JOIN OUR BOOK CLUB



SUBSCRIBE TO OUR MONTHLY EMAIL NEWSLETTER

LEARN ABOUT THE BEN FRANKLIN SOCIETY

JOIN THE SOCIETY

BOOK A COMPANY OR GROUP MEETING AT THE CABIN

Ben Franklin Society NEWS

ON THE WEB: "WWW.BENFRANKLINSOCIETYNC.ORG" ON FACEBOOK AS: "BEN FRANKLIN SOCIETY" AND "LYNCH CREEK FARM"



Lynch Creek Farm NEWS

CHARITABLE • TAX EXEMPT • NON-PROFIT • CORPORATION
WITH EDUCATIONAL, CULTURAL AND ECONOMIC DEVELOPMENT FOCUS

BEN FRANKLIN SOCIETY
PROJECT REPORT

JANUARY 2020

GRIST MILL INVENTORY PROJECT

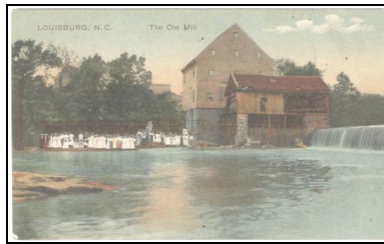
JANUARY FIELD TRIP SCHEDULE

Thursday, January 9th at 12:00 noon

Tuesday, January 14th at 9:00 am

Wednesday, January 29th at 11:00 am

Contact: Bob Radcliffe at 252-767-1167 to attend



Preparatory work began in December 2018, with a visit to NCDCCR in Raleigh, to meet new Archaeology Site Registrar, Rosie Blewitt-Golsch. A Prototype Mill Site filing process has been developed that now enables us to proceed and finally accomplish the goals of this Project that Bob started in 2008. We successfully completed our first Archaeological Site Filing on December 11th, 2018. The **WHITAKER MILL on Lynch Creek** was assigned the **OSA-ID 31FK165**. Each Site is assigned a permanent Site-ID by the OSA Site Registrar. As we complete and submit each Final Site Report, we will post redacted PDF versions on our BFS website. We encourage you to download and review these Site Reports.

Our Field Trips record missing GPS Coordinates and Photography, so that additional Site Reports could be finalized. Contact Bob Radcliffe to register for the Field Trip you want to attend. We will gather at the Lynch Creek Farm Cabin for a quick orientation before departing for 3-hours.

GRIST MILL INVENTORY SITE REPORT STATUS

<u>SITE REPORT (ALPHABETIC ORDER)</u>	<u>OSA-ID</u>	<u>STATUS</u>
DYKING CHANNELIZATION of Lynch Creek	31FK176	<u>COMPLETED</u>
EDWARDS MILL on Eaves Creek trib. of Lynch Creek	31FK177	IN-PROCESS
GILL MILL on Lynch Creek	31FK178	<u>COMPLETED</u>
INDIAN GRINDING HOLES on Lynch Creek	31FK179	<u>COMPLETED</u>
INDIAN VILLAGE/MOUND nr. Lynch Creek at Tar River	31FK180	<u>COMPLETED</u>
LETHA abandoned town nr. Whitaker Mill on Lynch Creek	31FK184	<u>COMPLETED</u>
LOUISBURG MILL on Tar River	31FK181	<u>COMPLETED</u>
QUARRY nr. Whitaker Mill	31FK182	<u>COMPLETED</u>
STONE HOUSE in Rocky Ford nr. Gill Mill	31FK183	IN-PROCESS
WHITAKER MILL on Lynch Creek	31FK165	<u>COMPLETED</u>

COMPLETED SITE REPORTS IN PDF-FORMAT ARE POSTED AT WWW.BENFRANKLINSOCIETYNC.ORG

(NAVIGATE TO THE PROJECTS / GRIST MILL INVENTORY MENU TO DOWNLOAD A COPY OR USE EMBEDDED-LINKS ABOVE)

Ben Franklin Society PROJECT REPORT

ON THE WEB: "WWW.BENFRANKLINSOCIETYNC.ORG" ON FACEBOOK AS: "BEN FRANKLIN SOCIETY" AND "LYNCH CREEK FARM"



Lynch Creek Farm NEWS

CHARITABLE • TAX EXEMPT • NON-PROFIT • CORPORATION
WITH EDUCATIONAL, CULTURAL AND ECONOMIC DEVELOPMENT FOCUS

BEN FRANKLIN SOCIETY
AFFILIATED GROUPS

JANUARY 2020


The Franklin County
ARTS Council
www.FCACArts.org

 **Perry Memorial Library**
www.PerryLibrary.org

Cedar Cross Retreat Center
www.CedarCrossRetreat.org

The Performing Arts Center

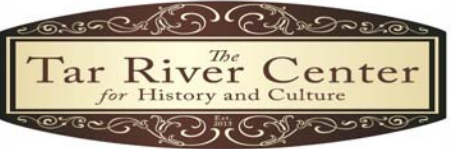
McGREGOR Hall

 **American Wine Society**
North Wake Chapter

 **THE BURNT BARREL**
YOUNGVILLE, NC
WINE SHOP, BEER STORE, BEER BAR
www.Facebook.com/BurntBarrelNC


Wake Forest Camera Club
www.wfccnc.org

Capital City Camera Club
Raleigh, NC
www.capcitycameraclub.com


The Tar River Center
for History and Culture

House & Garden Club
Henderson, NC

CAKES BY TRACEY
315 Dabney Drive
Henderson, NC
CALL 301-751-4870


ROIREVOLUTION®

 **WWW.GRAINMILL.COOP**
Open to the public
Members save 10%
No minimum order

**Friends of H. Leslie Perry
Memorial Library**
www.perrylibrary.org/friendsoflibrary.html

Wake Forest Garden Club
Wake Forest, NC

Granville Garden Club
Oxford, NC


UnionBank
EVERY DAY BETTER

LOUISBURG COLLEGE
www.louisburg.edu

 **PERSON PLACE
Preservation
Society**

First Baptist Church
Henderson, NC


**ALSTON-PLEASANTS
POST-GRADUATE SCHOLARS FUND**
www.alstonpleasants.org


BLUE-COLLIE COFFEE - LOUISBURG, NC

CCB
CITIZENS COMMUNITY BANK
You'll love banking here!
www.cbbsite.com

Roxboro Garden Club
Roxboro, NC

 **TRIANGLE NORTH
HEALTHCARE FOUNDATION**

 **HOUSE CONCERTS**
Lisa & Joel Wolf
Youngsville, NC
919-556-5068


THE M DEPOT
Henderson, NC 252-430-7771

Ben Franklin Society AFFILIATED GROUPS

ON THE WEB: "WWW.BENFRANKLINSOCIETYNC.ORG" ON FACEBOOK AS: "BEN FRANKLIN SOCIETY" AND "LYNCH CREEK FARM"

Lynch Creek Farm NEWS

"PHILADELPHIA STYLE WITH CAROLINA CHARACTER"

URBAN ELEGANCE • RURAL CHARM • SUSTAINABLE AND ORGANIC FOODS



LYNCH CREEK FARM CABIN

CLICK IMAGE TO GOOGLE MY BUSINESS

WELCOME TO LYNCH CREEK FARM
AN EXCEPTIONAL BUSINESS MEETING, DINING AND
ENTERTAINMENT VENUE RECOGNIZED BY THE
RALEIGH NEWS & OBSERVER (N&O) AS THE
"BEST KEPT SECRET IN FRANKLIN COUNTY"

OUR AUTHENTIC LOG CABIN PROVIDES WHAT
PROPRIETOR BOB RADCLIFFE CALLS
"PHILADELPHIA STYLE WITH CAROLINA CHARACTER"

THE CABIN BACK PORCH EXTENDS DINING SERVICE
INTO THE TREETOPS, WHILE THE FRONT PORCH
SEASONALLY FEATURES LIVE ENTERTAINMENT

LYNCH CREEK FARM LOG CABIN EVENT VENUE



BUSINESS MEETINGS
IN A RURAL SETTING
WITH URBAN CONVENIENCES



PHILADELPHIA STYLE WITH CAROLINA CHARACTER

CLICK IMAGE TO DOWNLOAD
LCF TRI-FOLD BROCHURE

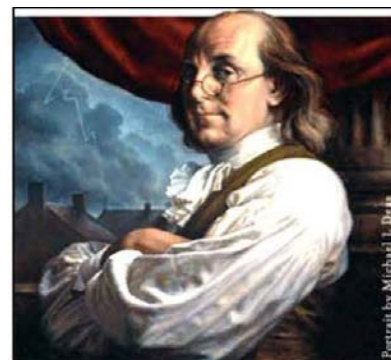
MAKE A RESERVATION AND COME SEE
FOR YOURSELF, THEN BOOK A BUSINESS
OR GROUP MEETING AT THE CABIN OR
PLAN AN OUTDOOR EVENT ON THE CABIN
GROUNDS

BOB FOUNDED OUR NON-PROFIT,
COMMUNITY SERVICE PARTNER,
BEN FRANKLIN SOCIETY
"TO ENHANCE THE EDUCATIONAL,
CULTURAL AND ECONOMIC DEVELOPMENT
OF FRANKLIN COUNTY
BY LEVERAGING ITS NATURAL AND
HISTORIC RESOURCES"

ALL EVENTS RAISE FUNDS TO SUPPORT
THE BEN FRANKLIN SOCIETY

CONTACT BOB RADCLIFFE TO SCHEDULE
A SITE VISIT

CALL/TEXT: 252-767-1167
EMAIL: BOB@LYNCHCREEK.COM



A charitable, tax-exempt
corporation that performs
independent and
collaborative projects to
enhance the educational,
cultural and economic
development of Franklin
County by leveraging its
natural and historical
resources

CLICK IMAGE TO DOWNLOAD
BFS TRI-FOLD BROCHURE

Lynch Creek Farm MEETING • DINING • EVENT VENUE

ON THE WEB: "WWW.LYNCHCREEK.COM" AND "LYNCH-CREEK-FARM.BUSINESS.SITE" ON FACEBOOK AS: "LYNCH CREEK FARM"



BOB'S OUTDOOR WOOD-FIRED OVEN

CUSTOM BREAD ORDERS

The Bakery accepts Custom Bread Orders. Are you planning a Special Event. Fresh-Baked Breads and Rolls can make it special!

What Breads or Rolls are needed for your Party?



CINNAMON BREAD FRENCH TOAST

To my surprise, I recently learned that my BreadWorks Cinnamon Bread makes outstanding French Toast. Thanks to BFS Member - Donna Wesemann!

It would seem this discovery should not have been surprising to me, but then again, Peter Reinhart was surprised to learn that my Cinnamon Bread is my variant of his famous Ciabatta Bread recipe.

An email I wrote to Peter about this fact, led to the establishment of the professional relationship we maintain to this day.

Throughout history, Bread has always held a special status as a basic food, social catalyst and spiritual metaphor. Strange how Bread works its ways!

SUPPORT OUR PICK-UP SITE VENDORS

Mike at ***The Depot Gifts & More in Henderson***

Paige at ***Blue Collie Coffee in Louisburg***

Amy at ***The Burnt Barrel***
(formerly ***Wine&Beer101 in Youngsville***)

David at ***The Grain Mill Cooperative in Wake Forest***

You can always arrange to Pick-Up Your Order at the ***Lynch Creek Farm Cabin***

JAN 2020 SCHEDULE

PICK-UP DAY - THURSDAY THE 23TH

WWW.LYNCHCREEK.COM/STORE

ORDER ONLINE NOW THRU JAN 20TH

INTRODUCE OUR BREADS TO YOUR FRIENDS

ADD A FRIEND TO OUR MAIL LIST - SHARE OUR POSTS ON FACEBOOK

CONTACT US

CALL/TEXT: 252-767-1167

EMAIL: BAKERY@LYNCHCREEK.COM

TO RECEIVE BAKERY SCHEDULE NOTICES

SUBSCRIBE to our Email[!] Newsletter

VISIT our Bakery Menu

